



CLIENT CASE STUDY

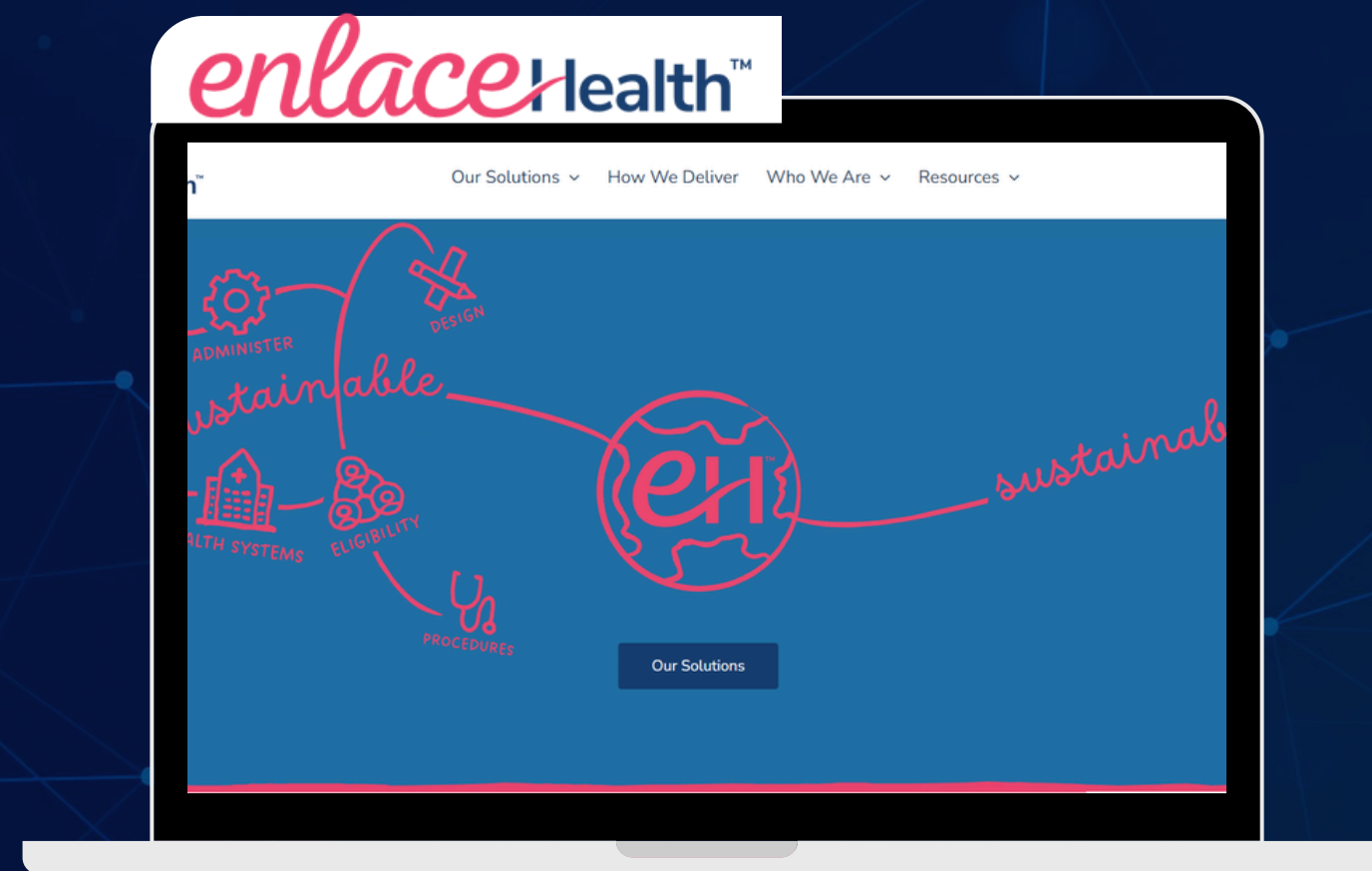
Enlace Health

Discover how Enlace Health, a leading HealthTech company, partnered with Gamma Force to elevate their cybersecurity strategy and execution. Gamma Force improved Enlace Health's strategic alignment, third party vendor risk management, security awareness, and overall posture, right-sizing their security program and building capabilities across the organization. This partnership ensured the protection of Protected Health Information and compliance with HITRUST and HIPAA requirements. Additionally, Gamma Force's support during the Log4j vulnerability incident demonstrated their expertise in effective incident management.



Steve Vandenberg

VP of Information Security
and Technology Operations



The Enlace infrastructure bridges the gap between the current chaotic system and an orderly healthcare world that empowers payers, providers, and patients to participate together in a quality driven and economically sound environment.

**ENLACE HEALTH MAKES
SUSTAINABLE
HEALTHCARE A REALITY.**

THE CHALLENGE

Enlace Health Main Challenge

“
At Enlace Health, a large focus has been on maturing and adding capabilities to our security program. We faced significant cybersecurity challenges. Managing third-party vendor risks, preparing for HITRUST audits, and enhancing our overall security maturity were daunting tasks. The Log4j vulnerability incident further highlighted our need for a robust security program.
”



VP of Information Security
and Technology Operations

- Evolving their cybersecurity strategy.
- Managing third-party vendor risks.
- Preparing for and succeeding in their HITRUST and HIPAA compliance.
- Addressing vulnerabilities such as the Log4j incident, including handling JNDI lookups.



CLIENT *enlace* | health™ 

STEVEN VANDENBURG

VP, Information Security &
Technology Operations



Warner Moore

Founder of GammaForce.io



THE SOLUTION

Gamma Force and Enlace Health Partnership

Gamma Force helped with their cybersecurity strategy, third-party vendor risk management and HITRUST audit.



Warner Moore
Gamma Force, Founder & vCISO

Strategic Guidance

- 01** Gamma Force guided Enlace Health in setting their cybersecurity strategy and prioritizing necessary capabilities, aligning security efforts with business objectives for cohesive progress leading to the hiring of a new full time security leader.

Risk Management and Compliance

- 03** Gamma Force improved third-party risk management with efficient vendor vetting and played a crucial role in streamlining HITRUST audit preparations, reducing administrative overhead.

Capability Enhancement

- 02** Gamma Force filled capability gaps in Enlace Health's security program, supporting strategic planning and executing core processes like risk assessments and vendor evaluations.

Incident Response

- 04** Gamma Force collaborated with Enlace Health to proactively patch vulnerabilities such as the Log4j, test fixes, address JNDI lookups, and ensure robust protection.



THE SOLUTION

1. Strategic Guidance

GAMMA FORCE BEGAN BY CONDUCTING A THOROUGH ASSESSMENT OF ENLACE HEALTH'S CURRENT SECURITY POSTURE, IDENTIFYING STRENGTHS, WEAKNESSES, AND AREAS REQUIRING IMMEDIATE ATTENTION. THIS ASSESSMENT INCLUDED EVALUATING EXISTING SECURITY POLICIES, PROCEDURES, AND TECHNOLOGIES IN PLACE.

- **Alignment with Business Objectives:** Ensuring the cybersecurity strategy supported Enlace Health's mission of delivering value-based care and aligning security initiatives with business goals to enhance overall performance.
- **Capability Prioritization:** Identifying and prioritizing critical capabilities to strengthen Enlace Health's security posture, focusing on application security, third-party risk management, and compliance with HITRUST and HIPAA standards.
- **Roadmap Development and Ongoing Support:** Gamma Force created a roadmap to ensure timely execution, advised on resource allocation and providing help with execution in key areas adjusting to augment gaps in their full time team.

GAMMA FORCE DELIVERY:

Enlace Health gained a well-defined cybersecurity strategy aligned with business objectives, prioritized capabilities, efficient resource allocation, continuous support, and an enhanced security posture, resulting in improved protection and compliance.





THE SOLUTION

2. Capability Enhancement

GAMMA FORCE PLAYED A CRUCIAL ROLE IN ENHANCING ENLACE HEALTH'S CYBERSECURITY CAPABILITIES BY ADDRESSING GAPS AND IMPROVING THE OVERALL SECURITY POSTURE. HERE'S HOW GAMMA FORCE WAS INVOLVED:

- **Capability Building:** Gamma Force initially assisted Enlace Health's CFO with security strategy in the absence of a full-time security leader. They developed a security roadmap, ensured program performance, and helped select a full-time leader. Additionally, Gamma Force provided training and resources to build internal capabilities, empowering the team to manage security tasks independently over time.
- **Adjusting our Contribution:** Following this, Gamma Force shifted focus to execution, supporting third-party vendor risk management, conducting penetration tests, facilitating HITRUST audit readiness, establishing a GRC tool, and responding to the Log4j incident. Their efforts primarily filled skill gaps and provided additional bandwidth under the security leader's direction.

GAMMA FORCE DELIVERY:

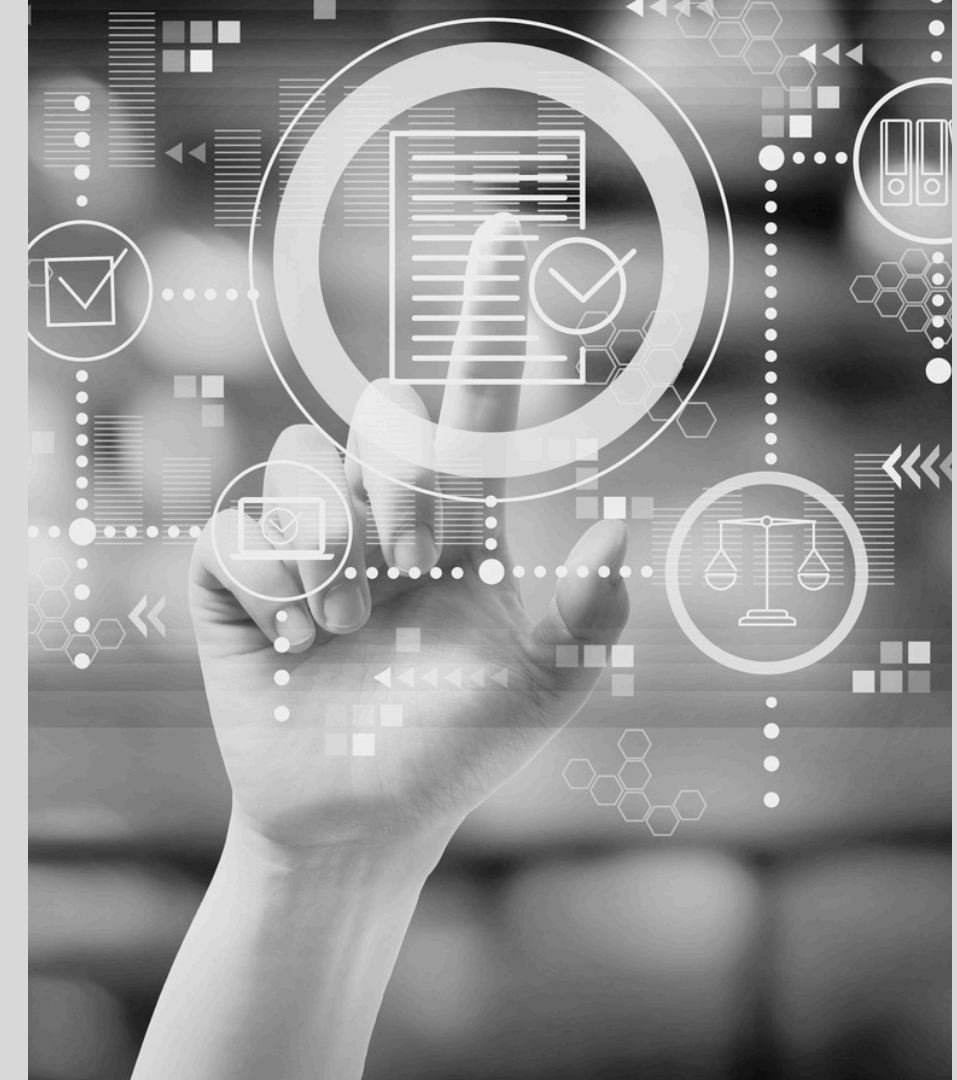
Enlace Health gained strategic guidance, enhanced execution capabilities, streamlined risk management, improved audit readiness, and effective incident response, all tailored to their evolving needs.



THE SOLUTION

3. Risk Management and Compliance

Gamma Force improved Enlace Health's risk management and compliance by executing thorough risk assessments, deploying rigorous third-party vendor risk protocols, streamlining HITRUST and HIPAA compliance, and implementing automated security controls for continuous monitoring and rapid incident response.



4. Incident Response

Gamma Force provided critical support during the Log4j vulnerability by performing real-time patch testing, modifying firewall rules to counter new exploit methods, addressing JNDI lookup obfuscations, and validating patch effectiveness through targeted exploitation attempts.



THE RESULTS

Key Results Achieved by Enlace Health

- **Successful Hiring of Full-Time Security Leader:** Assisted in the selection and hiring of a full-time security leader, further strengthening Enlace Health's internal security leadership.
- **Strategic Guidance and Roadmap Development:** Improved third-party vendor risk management, effective penetration test execution, and successful HITRUST audit readiness and facilitation.
- **Streamlined Risk Management:** Efficient management of recurring security activities, establishment of a GRC tool, and proactive incident response to the Log4j vulnerability.
- **Refocused Execution with Renewal:** Gamma Force's ongoing support provides Enlace Health with a dynamic and responsive security program that can adapt to new threats, regulatory requirements, and organizational changes, ultimately leading to a stronger security posture and better compliance.





gammaforce.io